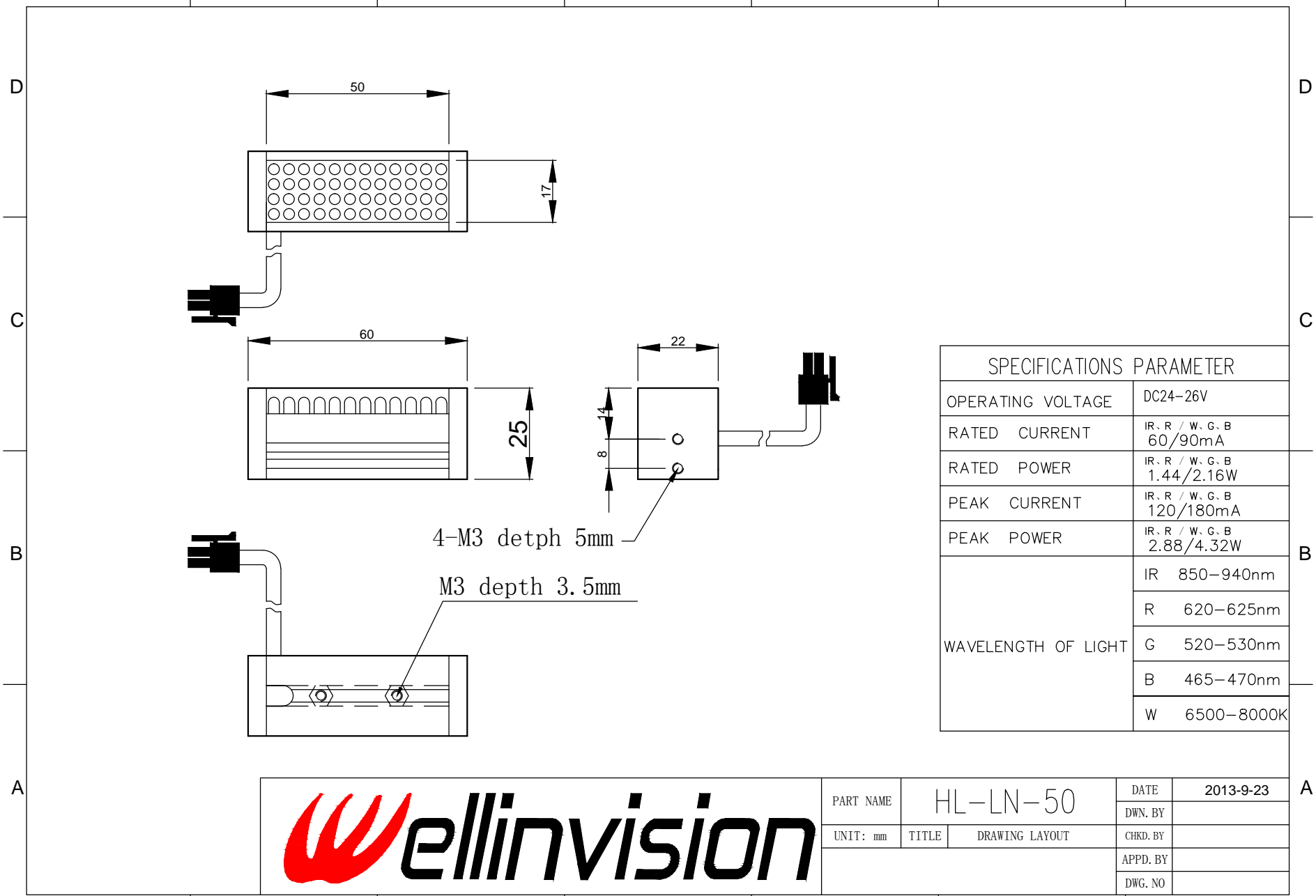


1 2 3 4 5 6 7



| SPECIFICATIONS PARAMETER | |
|--------------------------|-------------------------------|
| OPERATING VOLTAGE | DC24-26V |
| RATED CURRENT | IR, R / W, G, B 60/90mA |
| RATED POWER | IR, R / W, G, B 1.44/2.16W |
| PEAK CURRENT | IR, R / W, G, B 120/180mA |
| PEAK POWER | IR, R / W, G, B 2.88/4.32W |
| WAVELENGTH OF LIGHT | IR 850-940nm |
| | R 620-625nm |
| | G 520-530nm |
| | B 465-470nm |
| | W 6500-8000K |



| | | | | |
|-----------|----------|----------------|----------|-----------|
| PART NAME | HL-LN-50 | | DATE | 2013-9-23 |
| UNIT: mm | TITLE | DRAWING LAYOUT | DWN. BY | |
| | | | CHKD. BY | |
| | | | APPD. BY | |
| | | | DWG. NO | |

1 2 3 4 5 6 7